



Protecting Property
Saving Lives

Tested & Approved by



Electrical Control Panel

As per IS/IEC-61439-1 & 2



www.asesindia.com

About The Company

ASES has its corporate head office at Ghaziabad, U.P. and Branch offices in Major cities. We have a distinctive niche in manufacturing wide range of Fire Alarm Systems (Conventional/ Addressable), Fire Rated Doors, Electrical Control Panels, Fire Suppression Systems, and Emergency-Exit-Lights used in various Industrial, Commercial, Hydro Power Projects and other institutions.

ASES's manufacturing is always in progress to the best and we do have 2 bigger units for production. We aim at manufacturing our products to not only have a beautiful appearance, but also that the customers perceive something of great intrinsic value when they use it. We constantly strive to create future products that which can prevent economic lows with technological highs.

The future of its manufacturing that ASES is to play an indispensable role in a Indian supply chain. This would be achieved by having the strength of the three combined effects; meeting the needs of the marketplace, advanced technology, and high-quality. Therefore, we will continue to provide the market with the reliable quality by making full use of our core technology of forging, investing for the future.

Our success will be validated when the end users use the product and "feel the utmost protection to the wealth". We will create an unlimited future through valued manufacturing. The company has core staff strength in managerial level, sales, research & development, production, quality, technical support and associated departments etc. in complete customer satisfaction in all areas of activities. A complete and integrated network of engineers, management professionals also abundant skills and resources make it easier to cater to all sort of requirements of our valued customers.

In a significant development, ASES having offices in Ghaziabad (U.P.), Delhi, Kolkata, Mumbai and Bangalore.

Our Electrical Control Panel are tested as per IS : 8623 in C.P.R.I., Bhopal.

Global Vision

Our vision is to operate our business with the highest level of integrity, responsibility and accountability and to continue to build on the trust that we have earned.

Global Mission

At ASES, we are committed to meet our clients' objectives by securing an edge over the industry quality standards in a cost-effective and timely manner. We incessantly strive to achieve long-term sustainability and high credentials by exceeding our clients' and employees' expectations. We wish to achieve a rewarding environment for our people and financial prosperity through our relentless perseverance and proper management.

Core Values & Corporate Culture

Our "Can Do" culture, the linchpin of our behavior, stems from our unity of conduct which is driven by our values. Our shared values are the benchmark against which each individual's integration capability and willingness are measured; they stand at the core of our code of conduct.

Motivated Commitment

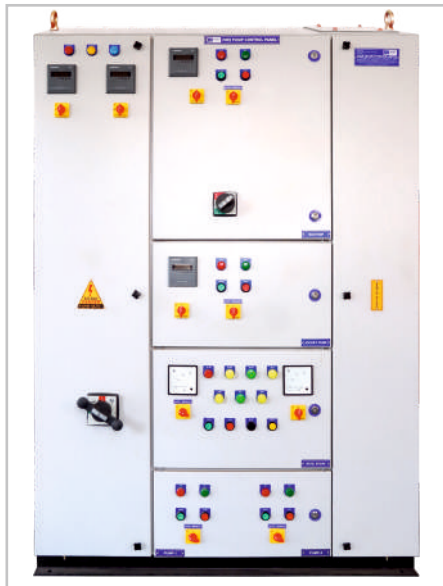
We shall deploy all available measures to complete seamlessly the job that our client's entrusted us for. The completion of task "as promised" and with "no exception" is at the forefront of our value chain.

Motor Control Centre (MCC)

We are recognized as one of the leading manufacturer of (Motor Control Centre) MCC panels widely appreciated all across the country. These have the capacity to feed larger loads and are designed as per the client specification. The MCC panels conform to the international standards and are available with multiple power stabs that helps in supporting high capacity industrial motors. Our MCC unit comprises the following feature:

Salient Features :

- Remote control operation facility
- MCCB for protection
- Change over switch for circuit change from mains to DG and vice-versa
- Direct on line starters that includes MCB, contractor, thermal overload replay and connectors
- Properly rated bus bars duly covered with acrylic sheet for safety
- GI strip for earthing
- Fan for ventilation, simple operation
- Minimum maintenance
- Feeds larger loads
- Multiple power stabs
- Durable & rust resistant



Technical Specification :

| | |
|--------------------------|--|
| Application | : Protection & Control of power Distribution |
| Operational Current | : 4000A |
| Operational Voltage | : 415v |
| Rated insulation voltage | : 690v |
| Ambient Temperature | : 45 degree C |
| Degree of Protection | : As per IS Standard |
| Type test Performed | : Short Circuit Withstand/Temp Rise Withstand/ Degree of Protection |
| Configuration | : Fixed Type |
| Enclosure Type | : Indoor/Outdoor |
| Bus bar | : Electrolytic Grade Aluminium/Copper |
| Housing | : 14/16 SWG |

Diesel Engine Control Panel

Main Features :

- Auto / Manual function available
- Reset, Accept, Mute functions available
- Start fail signal available
- Trickle / Boost charging available
- Auto cut off battery charging available
- Over speed, LLOP, HWT, Audio / Visual signal available
- Alarm facilities
- Wall mounting / Floor mounting available
- Manual Starts / Stop function available

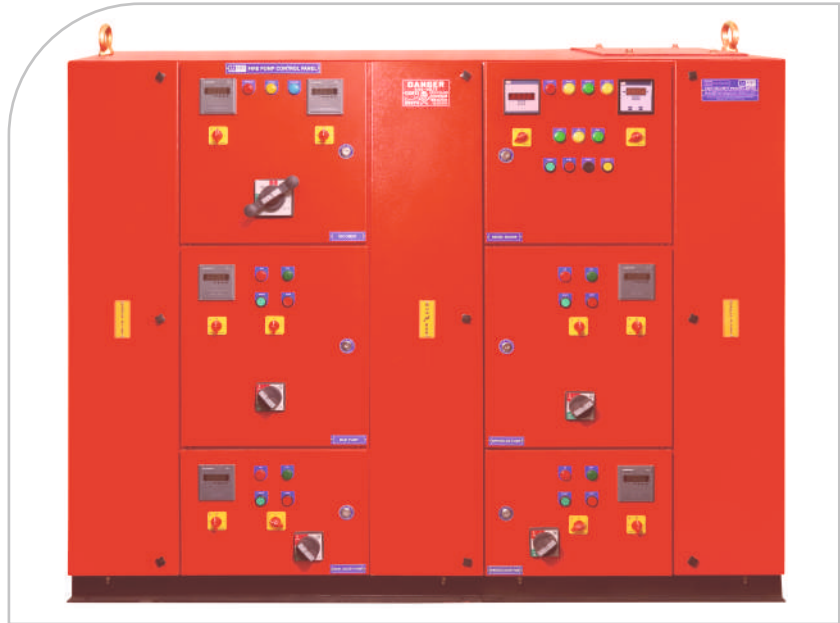


Fire Pump Panel

We also provide wide range of industrial equipment, comprises of Fire Pump Panel (jockey, main and engine control) in compliance with international standards of quality. Designed as per the specifications of clients, we provide them with qualitative fire hydrant system that is an effective and efficient means of extinguishing large fire. These fire hydrant systems can be connected with fire detection system for easy suppression of fire at initial stage.

Salient Features :

- Easy to operate
- Maintenance free
- Longer working life
- High performance
- Auto/Manual Function



Technical Specification :

| | |
|--------------------------|--|
| Application | : Protection & Control of power Distribution |
| Operational Current | : 4000A |
| Operational Voltage | : 415v |
| Rated insulation voltage | : 690v |
| Ambient Temperature | : 45 degree C |
| Degree of Protection | : As per IS Standard |
| Type test Performed | : Short Circuit Withstand/Temp Rise Withstand/ Degree of Protection |
| Configuration | : Fixed Type |
| Enclosure Type | : Indoor/Outdoor |
| Bus bar | : Electrolytic Grade Aluminium/Copper |
| Housing | : 14/16 SWG |

Remote Indication Panel

Remote Indication Panel is the best way to operate a panel from a remote or different location. These are designed with a height most suitable and spacious for human operation, made with the best quality push buttons & indicators. Our control desk panels are the most reliable in industry.

Main Features :

- Indicates Fire condition and/or Fault condition occurred in each of the fire control panels connected to it.
- Control effect on the connected fire control panels that have sent a signal for Fire condition.



LT Panel

PCC is the backbone of power distribution in every industry. The power from the Transformer is fed through bus ducts into PCC, including the main protection devices for the entire system like Air Circuit Breakers, Fuse Switch Units etc. Electrical Power Control Center includes the Main Bus Bar of the whole system. All the main protections are provided in this panel. From this panel the power is distributed to various sub-distribution panels. The panel comes with custom-built designs as per the specifications of the clients.

Salient Features :

- Easy to operate
- Maintenance free
- Longer working life
- High performance



Technical Specification :

| | |
|--------------------------|--|
| Application | : Protection & Control of power Distribution |
| Operational Current | : 4000A |
| Operational Voltage | : 415v |
| Rated insulation voltage | : 690v |
| Ambient Temperature | : 45 degree C |
| Degree of Protection | : As per IS Standard |
| Type test Performed | : Short Circuit Withstand/Temp Rise Withstand/ Degree of Protection |
| Configuration | : Fixed Type |
| Enclosure Type | : Indoor/Outdoor |
| Bus bar | : Electrolytic Grade Aluminium/Copper |
| Housing | : 14/16 SWG |

Starter Panel

Reduces the mechanical stress on the motor and shaft, extending the lifespan of the system.

Types of Starter Panel :

- DOL starter
- Star-Delta starter
- Auto-Transformer starter
- Soft Starter

Main Features :

- Three phase and single phase starter available
- Easy installation and connections
- Operational voltage - 415V
- Wall mounting / Floor mounting available



AMF Panel (Auto Main Failure)

Auto Main Failure Panel, also known as AMF Panel, are used to automatically changeover from mains electricity supply to stand-by generator or genset on failure of the mains supply. When the mains supply is restored, the system automatically changes back and stops the genset.

These panels are provided with mechanically or electrically interlocked pole contactors or MCCBs. They are either installed on a wall or in a free standing outdoor cabinet with cable. The entry and exit takes place through the base using detachable aluminum gland plates.

Uses & Applications :

Some of its operational domains includes:

- Processing plants
- Agriculture
- Generators
- Engineering units
- Hospitals
- Offices



Automatic Power Factor Control Panel

We manufacture and provide energy efficient APFC Panels (Automatic Power Factor Control Panels), that are especially designed to save electricity. This panel consists of a power factor controller that monitors accurately the reactive power in power system in order to save energy.

Salient Features :

- Simple Operation
- Reliable performance
- Trouble-free operation
- Suitable APFC relay
- Both manual and automatic control
- Rugged construction
- Rust proof
- Long functional life



VFD Panel

VFD Panel control the speed of the electric motor and feed pump. It used in drilling, pumping & other large machine applications like Conveyor and compressor.

Main Features :

- Variable frequency drives not only offer adjustable speeds for accurate and precise control applications, but also have more benefits in terms of process control and conservation of energy.



PLC Based Automation Control Panel

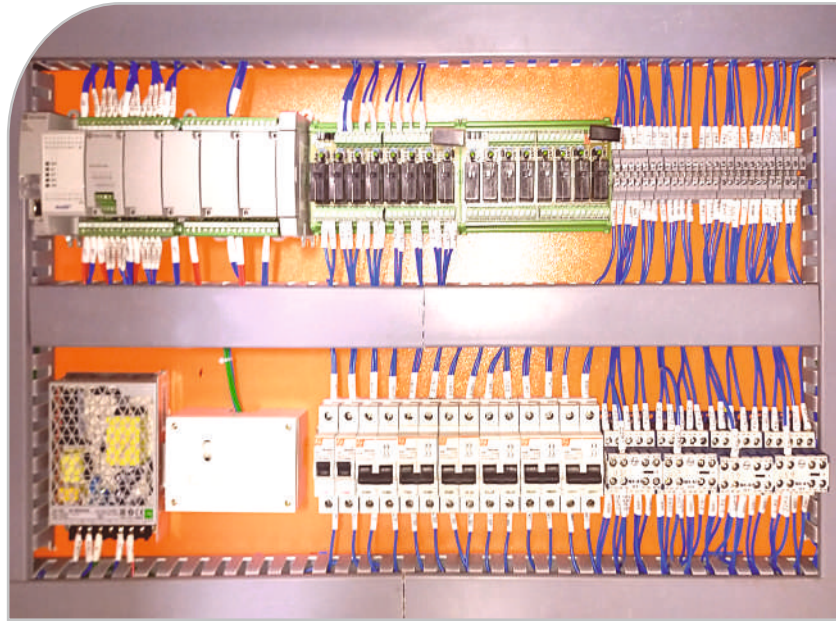
We offer superior quality of PLC based control panels and Electrical hardware base Control Panels. These Control Panels are designed as per end user requirement. We undertake turnkey project with field instrumentation & PLC Interface.

Advantages :

- PLC panels are designed as per the requirement of end user.
- Minimizes human-machine interface, thus reduces the possibility of error.
- System can be monitored & controlled at single junction
- Data logging of all processes parameters with alarm.
- System parameter can be changed as per end user requirement.

Application :

- Power plant
- Industrial plant
- General Engineering Utility



ASES Dossier at a Glance

- ISO 9001 certified company
- CPRI tested for 50 KA in 1 sec.
- Ingress protection IP : 42
- Supplied all over India.
- Repeat order from customers
- 10 Electrical product categories

Testing of Electrical Panels

- Insulation test by V Megger
- High voltage test at 2.5 KV for 1 sec.
- Functional test
- Aluminium & Copper conductivity test
- Switch Gear operational test
- Bus bar rating up to 4000A

Research & Development : ASES has an independent in houses Research and Development Centre for developing the customized innovative products with multi speciality and features.

Quality : Quality begins on inside and works its way out. Everything that we do reflects quality and standard and the focus of what ASES stands for ASES. Follows the most stringent quality procedures for all the department with its facility. The quality procedures cover inspection and quality control in every stage.

Deluge Valve Panel

It ensures the application of water over a larger area at the time of fire mishaps. The deluge fire sprinkler systems are used when rapid-fire spreads cause a lot of damage and need to be attended instantly.

Main Features :

- A push button on the panel will enable the operator to open the DV Manually.
- When this button is operated the "Manual" indication will come on and the Solenoid mounted on the DV will be switched on.
- In auto mode a relay contact can be used to signal the "MAIN FAP" indication along with this the Solenoid mounted on the DV will be switched on.
- The Audio Visual alarm will also sound





Unit-1
Sahibabad Ind. Area



Unit-2
Greater Noida

Product Range

- Motor Control Centre (MCC)
- Remote Control Panel/Desk
- Fire Pump Panel
- Diesel Engine Control Panel
- LT Panel
- Starter Panel
- AMF Panel (Auto Main Failure)
- Automatic Power Factor Control Panel
- PLC Based Automation Control Panel

Mapping Our Growth



Panels Assembled with International Brands :



ASES Security Pvt. Ltd., Delhi
 ASES Security Pvt. Ltd., Sahibabad (U.P.)
 ASES Security Pvt. Ltd., Kolkata
 ASES Security Pvt. Ltd., Mumbai
 ASES Security Pvt. Ltd., Bangalore

Auth. Distributor